

---

---

## Shock sensor A115 type specification

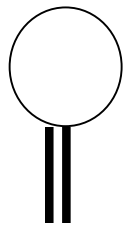
### (Patent s)

#### - Features:

- Micro Shock signal detecting.
- Non direction limited.
- 60,000,000 times shock guarantee (special gold alloy plated)
- Low cost circuit can adjust Sensitivity.
- Mechanical type (non mercury inside)

#### - Dimension:

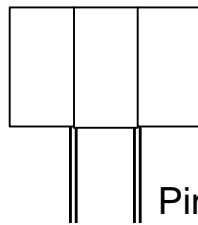
Dia. **4.0mm**



Length: **3.0mm**

Thickness: **0.8mm.**

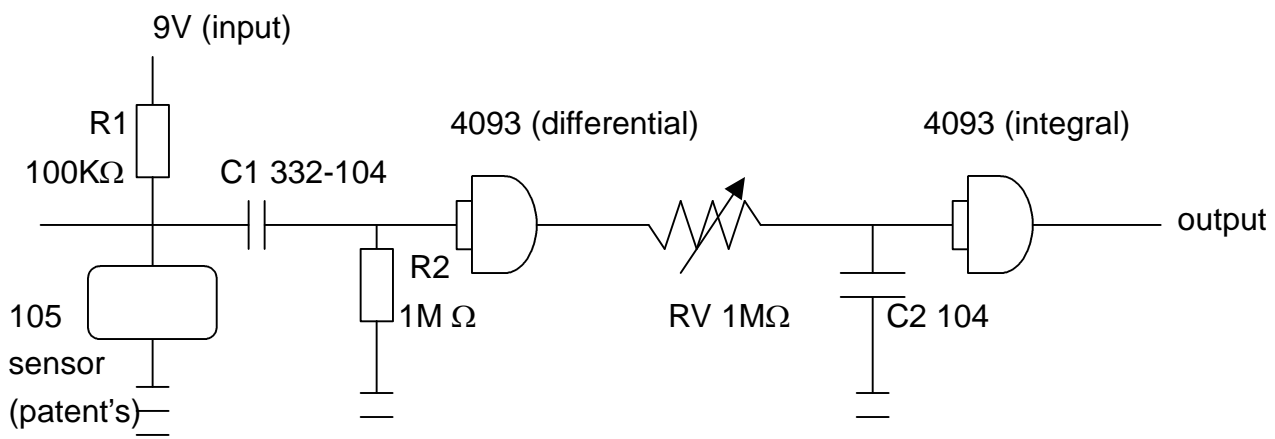
sensor width: **5.5mm.**



Pin width: **0.5mm.**

pin pitch: **2.8mm**

#### - Reference circuit:



#### - Attention:

1. The point of output must become **square wave**. **(Can not use as On/Off shock switch!)**
2. Take low or high of output square wave into your alarm system and adjust sensitivity from the delay time length.

---

\* circuit design principles: Principle -> with Schmitt triggered the first differential signal -> then the integral and reorganized into a square wave-> take the up and down along as a wave adjustment circuit watching to much of the wave (or how many waves)-> as sensitivity adjustment **so that it will work**